



**S.V.M.V.V. Society's**  
**SVM ARTS, SCIENCE AND COMMERCE COLLEGE**

Dist: Bagalkote **ILKAL - 587 125** Karnataka

Accredited with **B<sup>++</sup>** Grade by NAAC  
Affiliated to Rani Channamma University, Belagavi

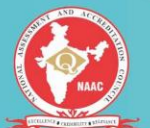
**FOURTH CYCLE NAAC ACCREDITATION**  
**SELF STUDY REPORT (SSR)**



**CRITERION - VII**

**7.1.7 (Q<sub>N</sub>M)**

**The Institution has Disabled-friendly, Barrier free Environment Built Environment with Ramps/lifts for Easy Access to Classrooms.**



Submitted to  
**National Assessment and Accreditation Council**  
Bengaluru

**SVMV SOCIETY'S  
SVM ARTS SCIENCE AND COMMERCE COLLEGE, ILKAL**

---

**7.1.7. The Institution has disabled-friendly, barrier free environment**

**INDEX**

<b>Sl.No</b>	<b>Particulars</b>	<b>Page No</b>
<b>1</b>	<b>Built environment with ramps/lifts for easy access to classrooms</b>	<b>1</b>
<b>2</b>	<b>Signage including tactile path, lights, display boards and signposts</b>	<b>2</b>
<b>3</b>	<b>Assistive technology and facilities for persons with disabilities  (Divyangjan) accessible website, screen-reading software,  mechanized equipment  Provision for enquiry and information: Human assistance,  reader, scribe, soft copies of reading material, screen reading</b>	<b>3-4</b>



**S.V.M.V.V. Society's**  
**SVM ARTS, SCIENCE AND COMMERCE COLLEGE**

Dist: Bagalkote **ILKAL - 587 125** Karnataka

Accredited with **B<sup>++</sup>** Grade by NAAC  
Affiliated to Rani Channamma University, Belagavi

**FOURTH CYCLE NAAC ACCREDITATION**  
**SELF STUDY REPORT (SSR)**



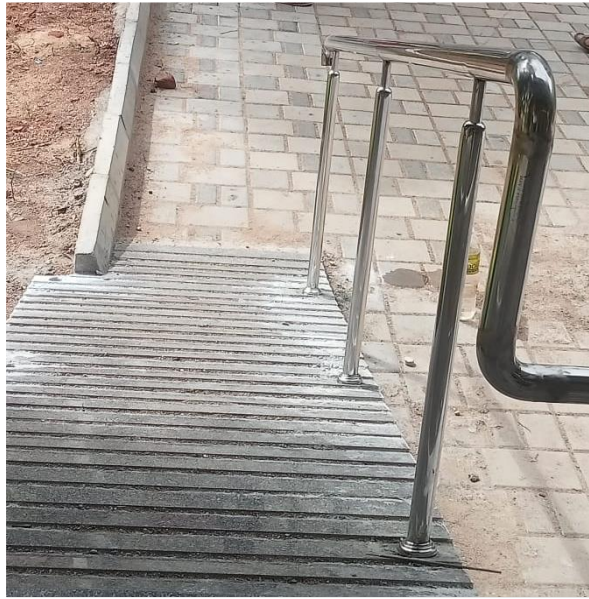
**CRITERION - VII**

**7.1.7 (Q<sub>N</sub>M)**

**The Institution has Disabled-friendly, Barrier free  
Environment Built Environment with Ramps/lifts  
for Easy Access to Classrooms.**



Submitted to  
**National Assessment and Accreditation Council**  
Bengaluru



**BUILT ENVIRONMENT WITH RAMPS FOR EASY ACCESS TO CLASSROOMS**



  
**PRINCIPAL**  
**S.V.M. Arts, Science and  
Commerce College, ILKAL**



**S.V.M.V.V. Society's**  
**SVM ARTS, SCIENCE AND COMMERCE COLLEGE**

Dist: Bagalkote **ILKAL - 587 125** Karnataka

Accredited with **B<sup>++</sup>** Grade by NAAC  
Affiliated to Rani Channamma University, Belagavi

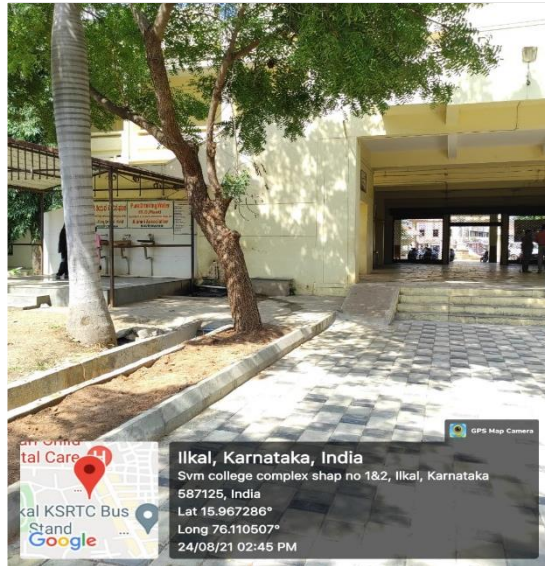
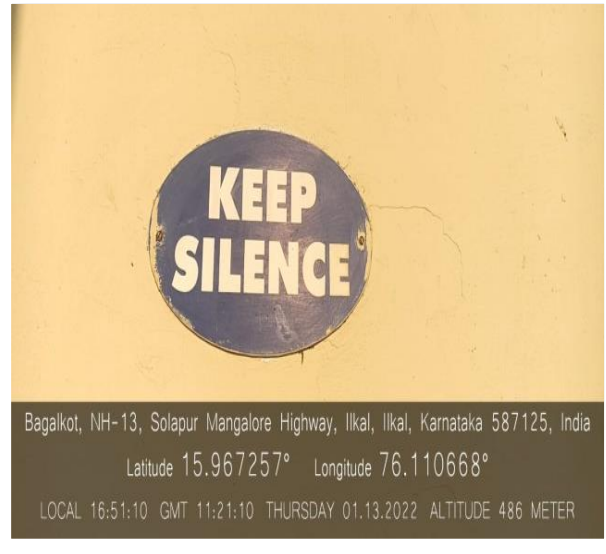
**FOURTH CYCLE NAAC ACCREDITATION**  
**SELF STUDY REPORT (SSR)**



**Signage including tactile path, lights,  
display boards and signposts**



Submitted to  
**National Assessment and Accreditation Council**  
Bengaluru



**SIGNAGE INCLUDING TACTILE PATH, LIGHTS, DISPLAY BOARDS AND SIGNPOSTS**



**PRINCIPAL**  
**S.V.M. Arts, Science and  
Commerce College, ILKAL**



**S.V.M.V.V. Society's**  
**SVM ARTS, SCIENCE AND COMMERCE COLLEGE**

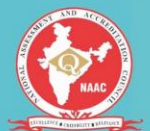
Dist: Bagalkote **ILKAL - 587 125** Karnataka

Accredited with **B<sup>++</sup>** Grade by NAAC  
Affiliated to Rani Channamma University, Belagavi

**FOURTH CYCLE NAAC ACCREDITATION**  
**SELF STUDY REPORT (SSR)**



**Assistive technology and facilities for persons with disabilities (Divyangjan) accessible website, screen-reading software, mechanized equipment**  
**Provision for enquiry and information : Human assistance, reader, scribe, soft copies of reading material, screen reading**



**Submitted to**  
**National Assessment and Accreditation Council**  
**Bengaluru**

## ENQUIRY AND HELP DESK AT THE INSTITUTION

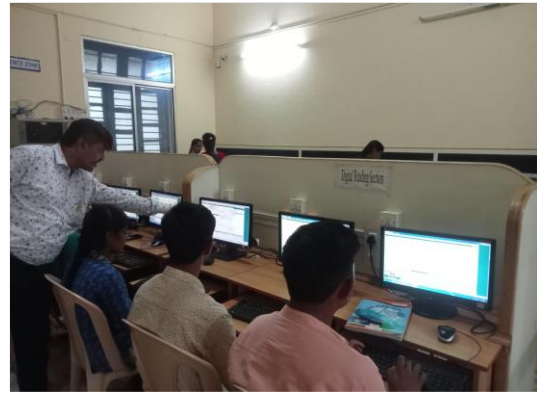
Security guard in the entrance gate provide information about the route and location of the administrative office of the college at the time of admission, help desk facility is provided for the candidates and divyagyan students. At the entrance of the college and office sign boards are displayed which helps the students get information about enquiry. Sign boards are displayed to find the locations. Barrier free ramps, barrier free roads, washrooms, library, class rooms, laboratories are made to find through sign boards.



  
**PRINCIPAL**  
**S.V.M. Arts, Science and  
Commerce College, ILKAL**



**PROVISION FOR STUDENTS' SOFT COPIES OF STUDY MATERIAL AND SCREEN READING**



**The Institute has disable friendly, barrier free environment**

Sl.No	Type of facilities	Yes /No
1	Physical facilities	Yes
2	Provison of lift	No
3	Ramps/Rail	Yes
4	Rest room	Yes
5	Braille Sftware / facilities	Yes
6	Scribe for examinations	Yes
7	Any other	-



  
**PRINCIPAL**  
**S.V.M. Arts, Science and  
Commerce College, ILKAL**